



We provide superior  
performing compressed air  
& gas systems with  
engineered longevity to  
reduce operating costs and  
improve productivity.



## ENGINEERED FOR SUPERIOR PERFORMANCE

*Compressed Air & Gas Systems*



### U.S. Headquarters - AIRpipe USA

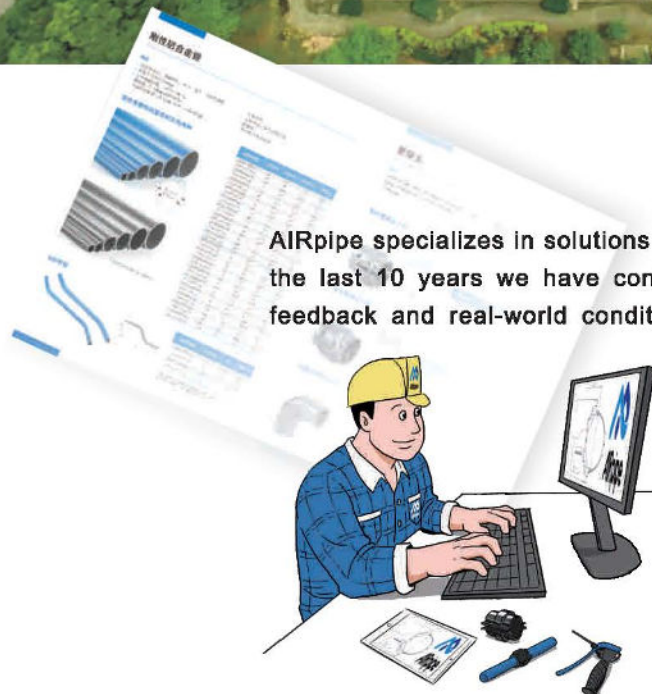
Tel: 602.362.PIP (7473)  
6855 S. Kyrene Rd, Suite #101, Tempe, AZ 85283  
Email: [customerservice@airpipeusa.com](mailto:customerservice@airpipeusa.com)  
Web: [www.airpipeusa.com](http://www.airpipeusa.com)



Publication Airpipe - #1/2016/USA  
AIRpipe reserves the rights to modify this documents without prior notice.







AIRpipe specializes in solutions for compressed air and fluids distribution. Throughout the last 10 years we have continued to invest in R&D; taking into account market feedback and real-world conditions. Our products are engineered to be the most superior available - Advancing the compressed air & gas piping industry.

AIRpipe maintains a >300,000 sq ft campus for manufacturing, R&D, and logistics. We are committed to being your total system solutions provider.

### Superior Reliability & Longevity

- Highly-durable materials resistant to corrosion, vibration, thermal variation, and outdoor weather conditions.
- Metal clamshell connectors for all diameters are stronger and more durable versus polymer fittings.
- Unique grab ring design (20-50mm) and lugged ring (63-200mm) allows for zero risk of disconnection.
- Patented active concentric seals provide leak-free performance, even in high vibration applications. Seal lifespan is double that of industry competitors.

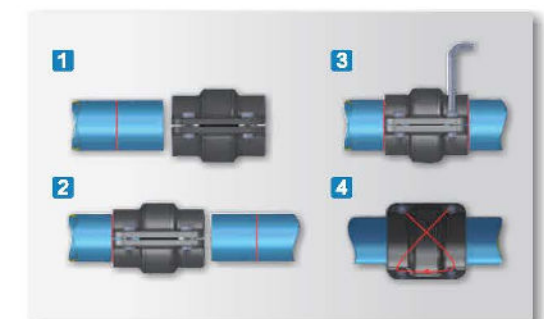


### Energy & Cost Savings

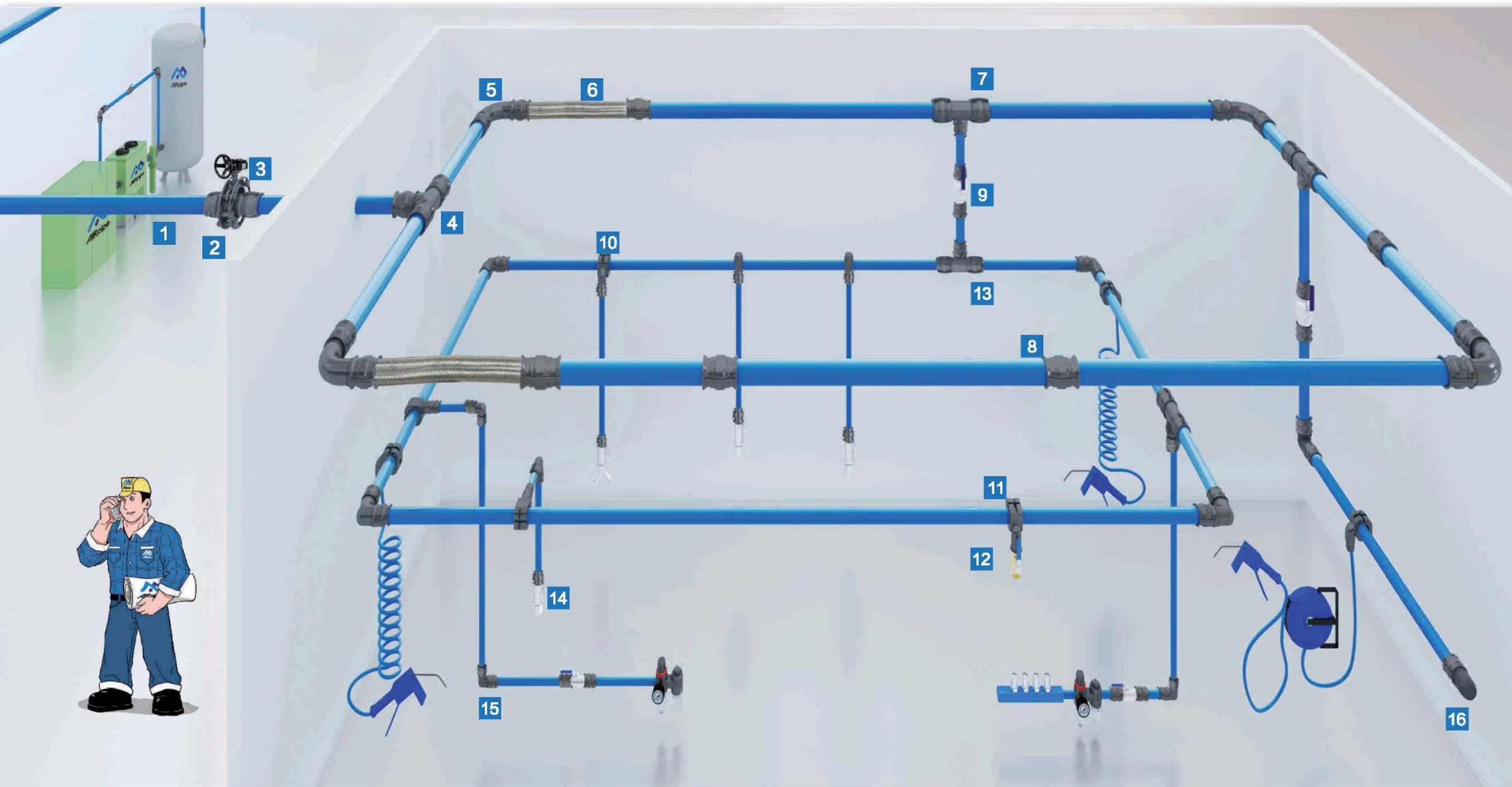
- The smooth interior design and high-flow connectors ensures a constant supply of clean air at a reduced pressure drop, resulting in significant energy savings.
- Guaranteed leak-free performance and superior longevity versus traditional pipe systems.

### Quick & Easy Modular Installation

- Complete range of pipe, fittings and accessories works easily for new projects, renovations & extensions.
- Requires no special tooling, welding, gluing, brazing, soldering, or thread cutting.
- Reusable, lightweight, and modular design allows for easy modifications.
- Quick drops can be added at any time to create new points of use.







- 1 Aluminum Pipe
- 2 Flanged Connector
- 3 Quick Connect Butterfly Valve
- 4 Equal Tee

- 5 90° Elbow
- 6 Flexible Hose
- 7 Reducer Tee
- 8 Pipe-to-Pipe Connector

- 9 Quick Connect Ball Valve
- 10 Aluminum Quick Drop
- 11 Quick Drop (Female Thread)
- 12 Brass Ball Valve

- 13 Quick Connect Equal Tee
- 14 Threaded Quick Connect Ball Valve
- 15 Quick Connect 90° Elbow
- 16 Quick Connect End Cap



# Product Range & Features

## Rigid Aluminum Pipe



- Up to max. 8" diameter.
- Blue, Gray and Green colour are available.
- High-quality powder coating available in blue, green and gray. Additional colors can also be supplied.
- Designed for compressed air, vacuum, and inert gases.
- Light-weight & corrosion-free.

## Pipe Connectors



- Quick-connect design.
- Superior reliability & longevity.
- Largest selection of fitting configurations.
- Modular & reusable.
- 100% recyclable & non-flammable materials.

## Drop Fittings



- Quick installation to main ring.
- Can be used vertically or horizontally.
- Design does not allow water to enter downstream points of use.
- Configurations allow for multiple drop connection types. e.g., hose reels.

## Ball & Butterfly Valves



- Quick connection.
- Available for BSP/NPT thread, flange, and plug-in connection types.
- High-flow design ensures optimal performance.

## Flexible Hose



- Suitable for compressor & equipment outlets to absorb vibration.
- Allows for expansion and contraction of the pipe system.
- Bypass obstacles.
- Resistant to mineral or synthetic lubricated oils.

## Tools & Accessories



- Suitable for various pipe systems.
- Used for a variety of installation methods, e.g., wall, beam, roof, channel, rod, etc.
- Designed to work best with AIRpipe products.

## BLUE ALUMINUM PIPE



AIRpipe	DN mm
1000	20
2000	25
4000	40
5000	50
6000	63
7000	80
8000	100
9000	150
A000	200

19 ft Length

AIRpipe	DN mm
1063	20
2063	25
4063	40
5063	50
6063	63
7063	80
8063	100
9063	150
A063	200

9.5 ft Length

## EQUAL 90° ELBOW



AIRpipe	DN mm
1003	20
2003	25
4003	40
5003	50
*Union connectors included	
6003	63
7003	80
8003	100
9003	150
A003	200

\*Use two union connectors

## EQUAL TEE



AIRpipe	DN mm
1005	20
2005	25
4005	40
5005	50
*Union connectors included	
6005	63
7005	80
8005	100
9005	150
A005	200

\*Use three union connectors

## GRAY ALUMINUM PIPE



AIRpipe	DN mm
1062	20
2062	25
4062	40
5062	50
6062	63
7062	80
8062	100
9062	150
A062	200

19 ft Length

AIRpipe	DN mm
1064	20
2064	25
4064	40
5064	50
6064	63
7064	80
8064	100
9064	150
A064	200

9.5 ft Length

## EQUAL 45° ELBOW



AIRpipe	DN mm
1004	20
2004	25
4004	40
5004	50
*Union connectors included	
6004	63
7004	80
8004	100
9004	150
A004	200

\*Use two union connectors

## END CAP



AIRpipe	DN mm
1006	20
2006	25
4006	40
5006	50
*Union connectors included	
6006	63
7006	80
8006	100
9006	150
A006	200

\*Use one union connector

## S-BEND



AIRpipe	DN mm
1001	20
2001	25

1 ½ ft Length

## PIPE TO PIPE CONNECTOR



AIRpipe	DN mm
1002	20
2002	25
4002	40
5002	50
6002	63
7002	80
8002	100
9002	150
A002	200

## REDUCING TEE



AIRpipe	DN mm	DN mm
2107	25	20
4207	40	25
5407	50	40
6407	63	40
6507	63	50
7407	80	40
7507	80	50
8407	100	40
8507	100	50
9407	150	40
9507	150	50
A407	200	40
A507	200	50

\*Union connectors included for 50 mm and below

7607	80	63
8607	100	63
8707	100	80
9607	150	63
9707	150	80
9807	150	100
A607	200	63
A707	200	80
A807	200	100
A907	200	150

\*Use three union connectors



### REDUCING PIPE TO PIPE CONNECTOR



AIRpipe	DN (mm)	DN (mm)
2121	25	20
4221	40	25
5421	50	40
5221	50	25
6421	63	40
6521	63	50
7521	80	50

Union connectors included for 50 mm and below

7621	80	63
8621	100	63
8721	100	80
9721	150	80
9821	150	100
A921	200	150

\*Use two union connectors

### FEMALE ALUMINUM THREADED JOINT



AIRpipe	DN (mm)	NPT
1119	80	3/4"
1019	80	1/2"
2219	25	1"
2019	25	1/2"
4419	40	1 1/2"
5519	50	2"

\*Union connectors included

6619	2 1/2"
7719	3"

\*Use one union connector

### QUICK DROP FEMALE THREAD



AIRpipe	DN (mm)	NPT
2011	25	1/2"
4011	40	1/2"
4111	40	3/4"
5011	50	1/2"
5111	50	3/4"
6011	63	1/2"
6111	63	3/4"
7011	80	1/2"
7111	80	3/4"
8011	100	1/2"
9011	150	1/2"

\*Union connectors included 50 mm and below

### QUICK CONNECT STAINLESS STEEL VALVE



AIRpipe	DN (mm)
4151	40
5151	50

\*Union connectors included

### MALE ALUMINUM ELBOW



AIRpipe	DN (mm)	NPT
1115	20	3/4"
2215	25	1"
4415	40	1 1/2"
5515	50	2"

\*Union connectors included

### MALE ALUMINUM THREADED JOINT



AIRpipe	DN (mm)	NPT
1017	20	1/2"
1117	20	3/4"
2017	25	1/2"
2117	25	3/4"
2217	25	1"
4217	40	1"
4317	40	1 1/4"
4417	40	1 1/2"
5417	50	1 1/2"
5517	50	2"

\*Union connectors included

6517	63	2"
6617	63	2 1/2"
7617	80	2 1/2"
7717	80	3"

\*Use one union connector

### QUICK DROP



AIRpipe	DN (mm)	DN (mm)
8410	100	40
9410	150	40
9510	150	50
A410	200	40
A510	200	50

\*Union connectors included

### CHANGE TO "QUICK CONNECT VALVE"



AIRpipe	DN (mm)
1051	20
2051	25
4051	40
5051	50

\*Union connectors included

### FEMALE ALUMINUM ELBOW



AIRpipe	DN (mm)	NPT
1113	20	3/4"
2213	25	1"
4413	40	1 1/2"
5513	50	2"

\*Union connectors included

### QUICK DROP



AIRpipe	DN (mm)	DN (mm)
2110	25	20
4110	40	20
4210	40	25
5110	50	20
5210	50	25
6110	63	20
6210	63	25
7110	80	20
7210	80	25
8110	100	20
8210	100	25
9210	150	25
A210	200	25

\*Union connectors included

### QUICK CONNECT VALVE FEMALE THREAD



AIRpipe	DN (mm)	NPT
1151	20	2 outlets 1/2"
1251	20	1/2"
2151	25	2 outlets 1/2"
2251	25	1"
2451	25	1/2"
4451	40	1 1/2"
5551	50	2"

\*Union connectors included

### QUICK CONNECT VALVE MALE THREAD



AIRpipe	DN (mm)	NPT
1351	20	3/4"
2351	25	1"
4351	40	1 1/2"
5351	50	2"

\*Union connectors included

### BRASS BALL VALVE



FEMALE	NPT
AIRpipe	
0073	1/2"
0173	3/4"
2073	1"
4073	1 1/2"
5073	2"

MALE	NPT
1073	1/2"
1173	3/4"

MALE/FEMALE	NPT
0273	1/2"
1273	3/4"

### FLANGE



AIRpipe	DN (mm)	SIZE
6170	63	63
7170	80	80
8170	100	100
9170	150	150
A170	200	200

All flanges come with bolts and flange gasket.

### FEMALE THREAD FLANGE (CAST IRON)



AIRpipe	DN (mm)	NPT
2279	25	1"
4479	40	1 1/2"
5579	50	2"
6279	65	1"
6479	65	1 1/2"
6579	65	2"
7279	80	1"
7479	80	1 1/2"
7579	80	2"
7679	80	2 1/2"
8479	100	1 1/2"
8579	100	2"
9279	150	1"
9479	150	1 1/2"
9579	150	2"
9679	150	2 1/2"
9779	150	3"

All flanges come with bolts and flange gasket.

### FIXING BOLTS



AIRpipe	DN (mm)
1865	M8, 40
0665	M8, 50
1565	M8, 70
1465	M8, 60

### BUTTERFLY VALVE



AIRpipe	DN (mm)	Type
6051	63	Cast Iron
7051	80	Cast Iron
8051	100	Cast Iron
9051	150	Cast Iron
A051	200	Cast Iron
6151	63	Stainless Steel
7151	80	Stainless Steel
8151	100	Stainless Steel
9151	150	Stainless Steel
A151	200	Stainless Steel

\*Use two union connectors

### ALUMINUM REDUCING FLANGE



AIRpipe	DN (mm)	SIZE
6771	80	63
7871	100	80
8771	80	100
8671	63	100
7671	63	80
0871	100	125
0771	80	125
9871	100	150
0971	150	125

All flanges come with bolts and flange gasket.

### FEMALE THREAD FLANGE (STAINLESS STEEL)



AIRpipe	DN (mm)	NPT
2270	25	1"
4470	40	1 1/2"
5570	50	2"
6270	65	1"
6470	65	1 1/2"
6570	65	2"
7270	80	1"
7470	80	1 1/2"
7570	80	2"
7670	80	2 1/2"
8470	100	1 1/2"
8570	100	2"
8670	100	2 1/2"
9470	150	1 1/2"
9570	150	2"
9670	150	2 1/2"
9770	150	3"

All flanges come with bolts and flange gasket.

### SWING CHECK VALVE



AIRpipe	DN (mm)	Type
6680	63	Cast Iron
7780	80	Cast Iron
8880	100	Cast Iron
9980	150	Cast Iron
AA80	200	Cast Iron

\*Use two union connectors

4480	40	Cast Iron
5580	50	Cast Iron

\*Union connectors included

AIRpipe	DN (mm)	Type
6681	63	Stainless Steel
7781	80	Stainless Steel
8881	100	Stainless Steel
9981	150	Stainless Steel
AA81	200	Stainless Steel

\*Use two union connectors

4481	2015 4481 99 40	Stainless Steel
5581	2015 5581 99 50	Stainless Steel

\*Union connectors included

### FLEXIBLE HOSES



Straight connection, Rubber

AIRpipe	DN (mm)	Length (MM)
1055	20	1000
2055	25	1000
4055	40	500
5055	50	500

Straight connection, metal

AIRpipe	DN (mm)	Length (MM)
6055	63	500
7055	80	500
8055	100	800
9055	150	900
A055	200	1400

\*Use two union connectors

30° Angle connection, Rubber

AIRpipe	DN (mm)	Length (MM)
4155	40	1200
5155	50	1200
6155	63	1200
7155	80	1700
8155	100	2000

Straight connection, Rubber

AIRpipe	DN (mm)	Length (MM)
1055	20	1000
2055	25	1000
4055	40	500
5055	50	500

\*Use two union connectors

30° Angle connection, Rubber

4155	40	1200
5155	50	1200

\*Use two union connectors



## FIXTURE CLAMPS & ACCESSORIES

Clamps, Plastic

AIRpipe	DN (mm)
1022	20
2022	25
4022	40
5022	50
6022	63
7022	80
8022	100

Clamps, Steel

4122	40
5122	50
6122	63
7122	80
8122	100
9122	150
A122	200

## CLAMP SPACER

AIRpipe	DN (mm)
0027	20/25
0127	40/50/63

## ADJUSTABLE BRACKET

AIRpipe	Length (MM)	to suit
0432	1200-2400	Threaded
0532	1200-2400	flange

Complete With Wall Expansion Bolts

## SQUARE STEEL CLAMP

AIRpipe	Length (MM)
0037	40

## GRIDER CLAMP

AIRpipe	DN (mm)
0433	M8

## UNIVERSAL BEAM SUSPENDER

AIRpipe	M6	DN (mm)
0335	M6	8

## FIXTURE CLAMPS & ACCESSORIES

AIRpipe	DN (mm)
0135	1"
0235	2"

Universal Clamp

## WIRE SUSPENSION CABLE

AIRpipe	Length (MM)
0150	Φ12

Wire Rope Clamp

AIRpipe	Suit to
0250	Φ12 wire Cable
0850	Φ12 wire Cable

## SQUARE STEEL ROD

AIRpipe	Length (MM)
0230	3000

## THREADED STEEL ROD

AIRpipe	Length (MM)
1150	40
1750	3000

## SELF-TAPPING SCREWS

Complete With Plastic Wall Plugs

AIRpipe	DN (mm)
1250	M5.5*60
2250	M5.5*35
2350	M6*60

## THREADED ADAPTORS

AIRpipe	NPT	NPT
0031	1/2"	1/2"
1131	3/4"	3/4"
2231	1"	1"
4431	1 1/2"	1 1/2"
5531	2"	2"

Aluminum, Male Thread Male Thread

AIRpipe	NPT	NPT
7650	3"	2 1/2"
7550	3"	2"
7450	3"	1 1/2"
7250	3"	1"
6550	2 1/2"	2"
5050	2"	1"
5450	2"	1 1/2"
4950	1 1/2"	1"
6250	2 1/2"	1"

Aluminum, Male Thread \*Female Thread

AIRpipe	NPT	NPT
8150	1"	3/4"
8450	1/2"	1/4"
8650	3/4"	1/2"

Brass, Male Thread \*Male Thread

8250	3/4"	1/2"
8550	1"	1/2"
8750	1/2"	3/8"

Brass, Male Thread \*Female Thread

8350	1/2"	1/4"
------	------	------

Brass, Male Thread \*Female Thread

## WALL MOUNTED BRACKET

AIRpipe	Length (MM)
0032	300
0132	500
0232	1200
0632	Suit to 150mm pipe
0732	Suit to Clamp fixed

Complete With Wall Expansion Bolts

## PRESSURE METER

AIRpipe	to suit
0483	pressure meter (shock resistance), 0-1.6mpa, 1.6
0583	pressure meter (non-shock resistance), 0-1.6mpa, 1.6
0683	copper shock absorption pipe, female thread 1/2" -MALE 1/2"

## MALE PNEUMATIC CONNECTOR

AIRpipe	NPT
0183	One 1/2"
0283	Two 1/2"
0383	Three 1/2"
0783	Four 1/2"

## ELECTRIC PIPE CUTTER

AIRpipe	DN (mm)
0244	63-200

## HOLE SAW BIT

AIRpipe	DN (mm)
0043	14MM
0143	19MM
0343	25MM
0443	38MM
0543	51MM

\*Consult sizing chart for proper bit selection

## PLIERS

AIRpipe	Length (MM)
0028	150

## MARKER

AIRpipe	DN (mm)
0044	20-200

## WATER DRAIN VALVE

AIRpipe	to suit
0973	Automatic Drain Valve
0873	Electronic Drain Valve

\*Use two union connectors

## SAMPLE CASE

AIRpipe	Length (MM)
0146	460x330x140mm

## TOOL KIT

AIRpipe	Length (MM)
0045	460x330x140mm

## ALUMINUM PIPE DEBURRER

AIRpipe	DN (mm)
0141	20-50

## DRILL ARBOR & PILOT BIT

AIRpipe	DN (mm)
0243	14-30mm
0643	32-152mm

## BENDING TOOL

AIRpipe	DN (mm)
0047	20
0147	25

## HOLE DEBURRER

AIRpipe	DN (mm)
0042	20-200

## VORTEX FLOW METER

AIRpipe	DN (mm)
4482	40
5582	50

\*Union connectors included

6682	63
7782	80
8882	100
9982	150
AA82	200

\*Needs two flange pipe connectors.

\*Local display type, for remote connection please contact your sales.

## ATMOLYSIS BAG

AIRpipe	to suit
1085	Atmolysis Bag

## ALUMINUM PIPE CUTTER

AIRpipe	DN (mm)
0240	0040Aluminum pipe cutter blade
0340	0140Aluminum pipe cutter blade
0040	Aluminum pipe cutter,20-63
0040	Aluminum pipe cutter,20-63
0140	Aluminum pipe cutter,40-100

## LUGGING MACHINE

AIRpipe	DN (mm)
0144	Electric, for 63-200
0544	Manual, for 63-200

AIRpipe	DN (mm)
0844	Charge type and hand held hydraulic machine, for 63-200



# Superior Reliability!

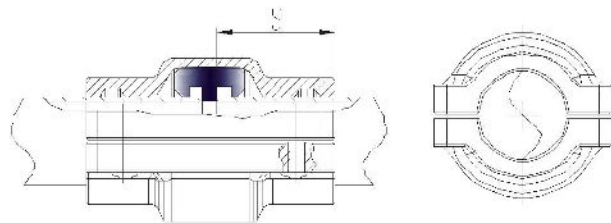
## Quick and Easy Installation



### Sizing Chart for Quick Drops

Arbor	Bit (mm)	Part Number					
0243	Φ 14	2110	2011				
		4110	4210	4011	4111	5110	5210
	Φ 19	5011	5111	6110	6210	6011	6111
		7110	7210	7011	7111	A210	
0643	Φ 25	8110	8210	8011	9110	9210	9011
	Φ 38	8410					
	Φ 51	9410	9510	A410	A510		

### Insertion Depth S For DN20~DN50 Connector



DN	Insertion depth S (mm)
20	29
25	29
40	39
50	39

- "S" denotes the insertion depth of the pipe into the connector.

### Installation Guide for DN20~DN50

**01** Mark the pipe with a marker pen as shown below:

**02** Insert the marked pipe into the connector:

**04** A portion of the marked lines should remain visible after the pipe is inserted into the connector.

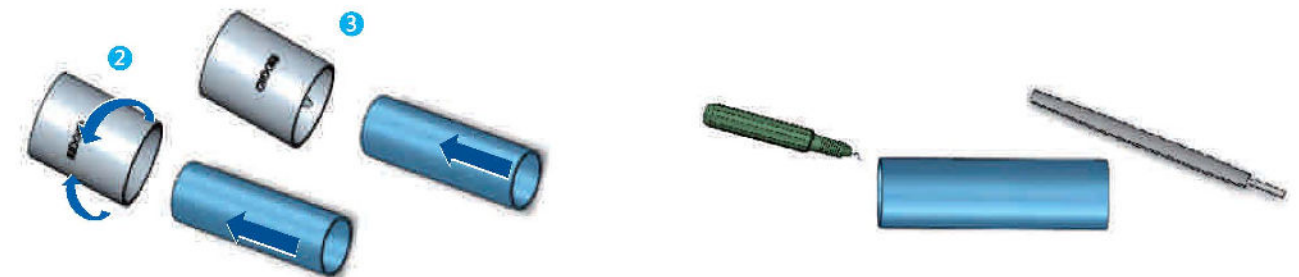
**03** Bring the second pipe to the connector and slide up to the marked insertion depth

**05** Hand Tighten the screws with an Allen key.

**06** Tighten the screws in an "X" pattern. To disassemble, perform the same operations in reverse order.

### Deburr & Chamfer The Outer and Inner Edges Before Installation

- Use 0141 for dn20-dn50 to chamfer the outer edges and also deburr the inner end.
- Use a file for dn63-dn200 to chamfer the outer edges; make use of a deburring tool to deburr the inside of the pipe end.



### Installation Guide for DN63~DN200

Slide the seal over the edge of the pipe so that it sits flush with the lugged edge.

Insert the second pipe into the seal until the seal and the lugged edge are flush.

Position the clamp over the seal.

Pull the pipe back towards the outside of the clamshell to complete alignment.

Tighten the pre-fitted screws by hand at first.

For effective assembly, tighten the screws in an "X" pattern. To disassemble, perform the same operation in reverse order.

Fully tighten the clamp screws. Min Torque: 10Nm. Max Torque: 44.5Nm, Clamshell halves should be flush with each other.



## Product Matrix & Quick Sizing



AIRPIPE PIPE	20mm ¾"	25mm 1"	40mm 1½"	50mm 2"	63mm 2½"	80mm 3"	100mm 4"	150mm 6"	200mm 8"
Blue Aluminum pipe(3m/6m)	•	•	•	•	•	•	•	•	•
S Bend	•	•							
Pipe Clip and Gasket	•	•							•

AIRPIPE CONNECTOR	20mm ¾"	25mm 1"	40mm 1½"	50mm 2"	63mm 2½"	80mm 3"	100mm 4"	150mm 6"	200mm 8"
Equal Aluminum Socket(Male Thread)	•	•	•	•	•	•			
Reducing Aluminum Socket(Male Thread)	•	•	•	•	•	•			
Equal Aluminum Socket(Female Thread)	•	•	•	•	•	•			
Equal Aluminum Socket with Flange					•	•	•	•	•
Reducing Aluminum Socket with Flange					•	•	•	•	•

AIRPIPE CONNECTOR	20mm ¾"	25mm 1"	40mm 1½"	50mm 2"	63mm 2½"	80mm 3"	100mm 4"	150mm 6"	200mm 8"
Equal Socket	•	•	•	•	•	•	•	•	•
Reducing Socket		•	•	•	•	•	•	•	•
90° Elbow	•	•	•	•	•	•	•	•	•
Equal Tee		•	•	•	•	•	•	•	•
Reducing Tee		•	•	•	•	•	•	•	•
Quick Drop		•	•	•	•	•	•	•	•
Thread Quick Drop		•	•	•	•	•	•	•	•
Valve	•	•	•	•	•	•	•	•	•

- The following table is based on a closed-loop pipe system.
- Working pressure is 8bar and pressure drop is 0.4bar, flow speed not taken into account.

Flow N m³/h	Length									
	50M	100M	150M	300M	500M	750M	1000M	1300M	1600M	2000M
10	20	20	20	20	20	20	20	25	25	25
30	20	20	20	25	25	25	25	25	25	40
50	20	25	25	25	25	25	40	40	40	40
70	25	25	25	25	40	40	40	40	40	40
100	25	25	25	40	40	40	40	40	40	50
150	25	40	40	40	40	40	40	50	50	50
250	40	40	40	40	50	50	50	50	50	50
350	40	40	40	50	50	50	63	63	63	63
500	40	40	60	50	63	63	63	63	63	63
750	40	50	50	50	63	63	63	80	80	80
1000	50	50	63	63	63	80	80	100	100	100
1250	50	50	63	63	63	100	100	100	100	100
1500	50	63	63	80	80	100	100	100	100	100
1750	63	63	80	80	80	100	100	100	100	150
2000	63	80	80	80	100	100	100	100	150	150
2500	63	80	80	80	100	100	100	150	150	150
3000	80	80	80	100	100	150	150	150	150	150
3500	80	80	100	100	150	150	150	150	150	150
4000	80	100	100	100	150	150	150	150	150	150
4500	80	100	100	150	150	150	150	150	150	150
5000	80	100	100	150	150	150	150	150	150	150
5500	100	100	100	150	150	150	150	150	150	150
6000	100	100	150	150	150	150	150	150	150	150
8500	150	150	150	150	150	150	150	150	150	200
7200	150	150	150	150	150	150	150	200	200	200
8000	200	200	200	200	200	200	200	200	200	200
8500	200	200	200	200	200	200	200	200	200	200
10000	200	200	200	200	200	200	200	200	200	200
12000	200	200	200	200	200	200	200	200*	200*	200*

### Technical Specifications

- Max. working pressure: 232 psi.
  - Vacuum: 0.13bar (absolute pressure)
  - Working temperature: -4 up to +176.
  - Suitable fluids: compressed air, oil-free or lubricated, wet, vacuum, inert gases.
  - Fireproof. and suitable for outdoor applications.
- \*Max. working pressure for DN200 is 188 psi.

### Qualification & Standards

97/23/EC, ASME B31.1, TUV, GB/T4437.1-2000, EN755-8, TS, UL 94



### Engineered for Superior Performance

- We are committed to provide superior products and service.
- R&D is a continuous process linked to real-world conditions & market feedback.
- Always customer oriented, from design production to sales and service.



we are at your **SERVICE**

