

# **Gardner Denver**

L07RS-L290RS (7-290 KW)  
VARIABLE-SPEED ROTARY SCREW COMPRESSORS

## **LRS-Series**



# Advanced Technology Inspired Simplicity

## A Better Approach

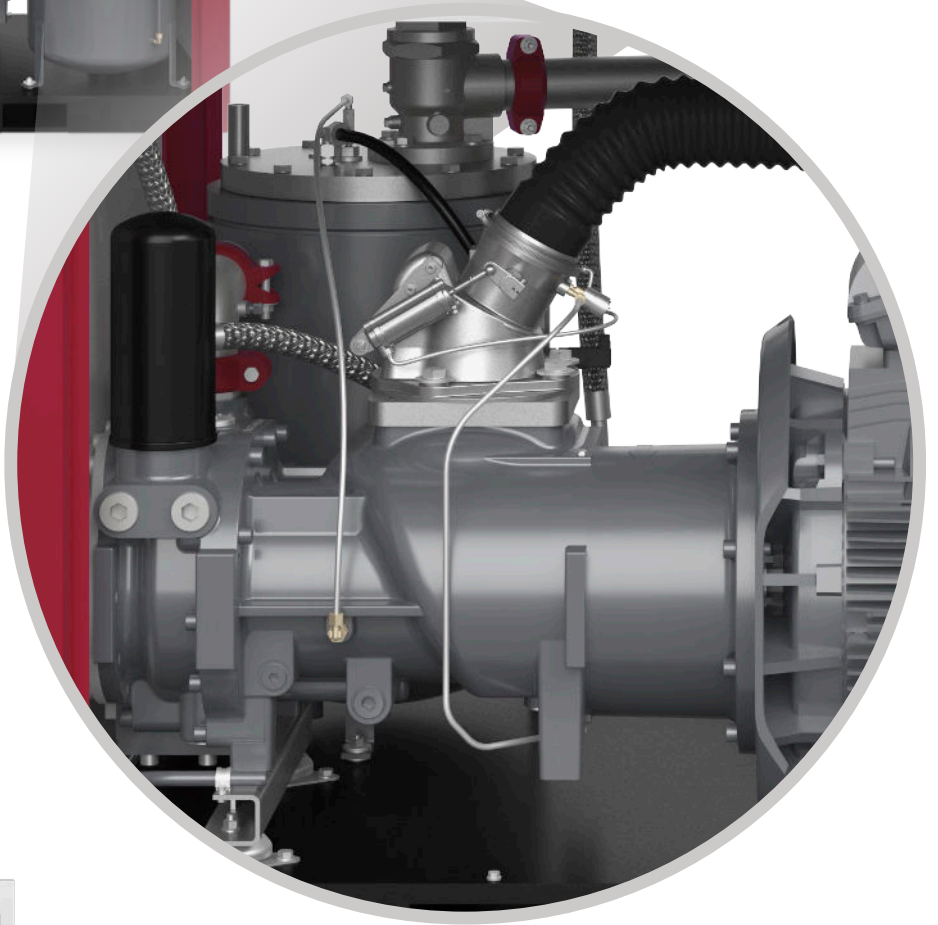
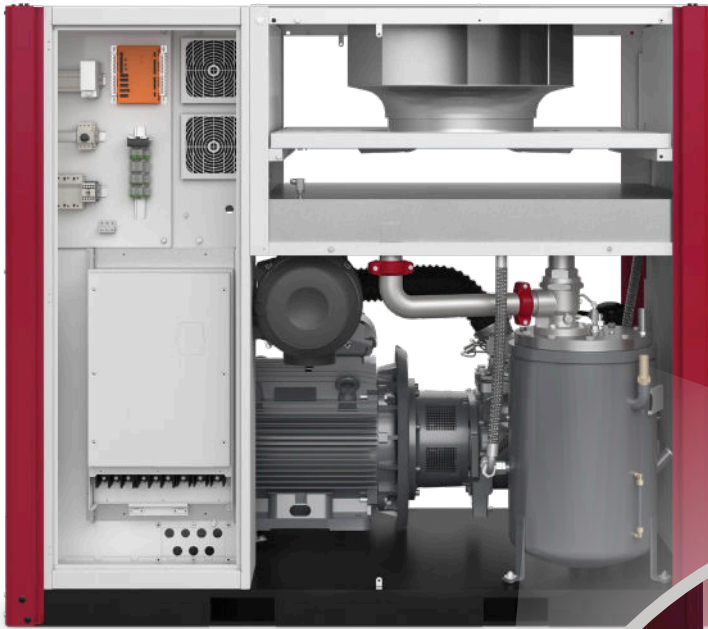
Gardner Denver has a long history of manufacturing compressed air equipment. With our LRS-Series line of products, we have uniquely combined simplicity with cutting edge design. The result—a compressor that delivers outstanding performance with unprecedented serviceability.

## The Total Package

Gardner Denver has the total package—extensive compressor and air treatment product lines, sales and service support through our extensive network of authorized local distributors, and industry leading warranty programs. Because we offer more than just compressed air equipment, we can provide solutions that keep you running, protect your production objectives, and save you money.



Expect More?  
Choose Gardner Denver





GARDNER  
DENVER—TAKING  
**QUIET**  
TO A WHOLE  
NEW LEVEL

Without sacrificing serviceability,  
the LRS-Series compressor packages  
feature some of the **smallest**  
**footprints** in the industry.



Increased Flexibility  
when Determining  
Installation Location

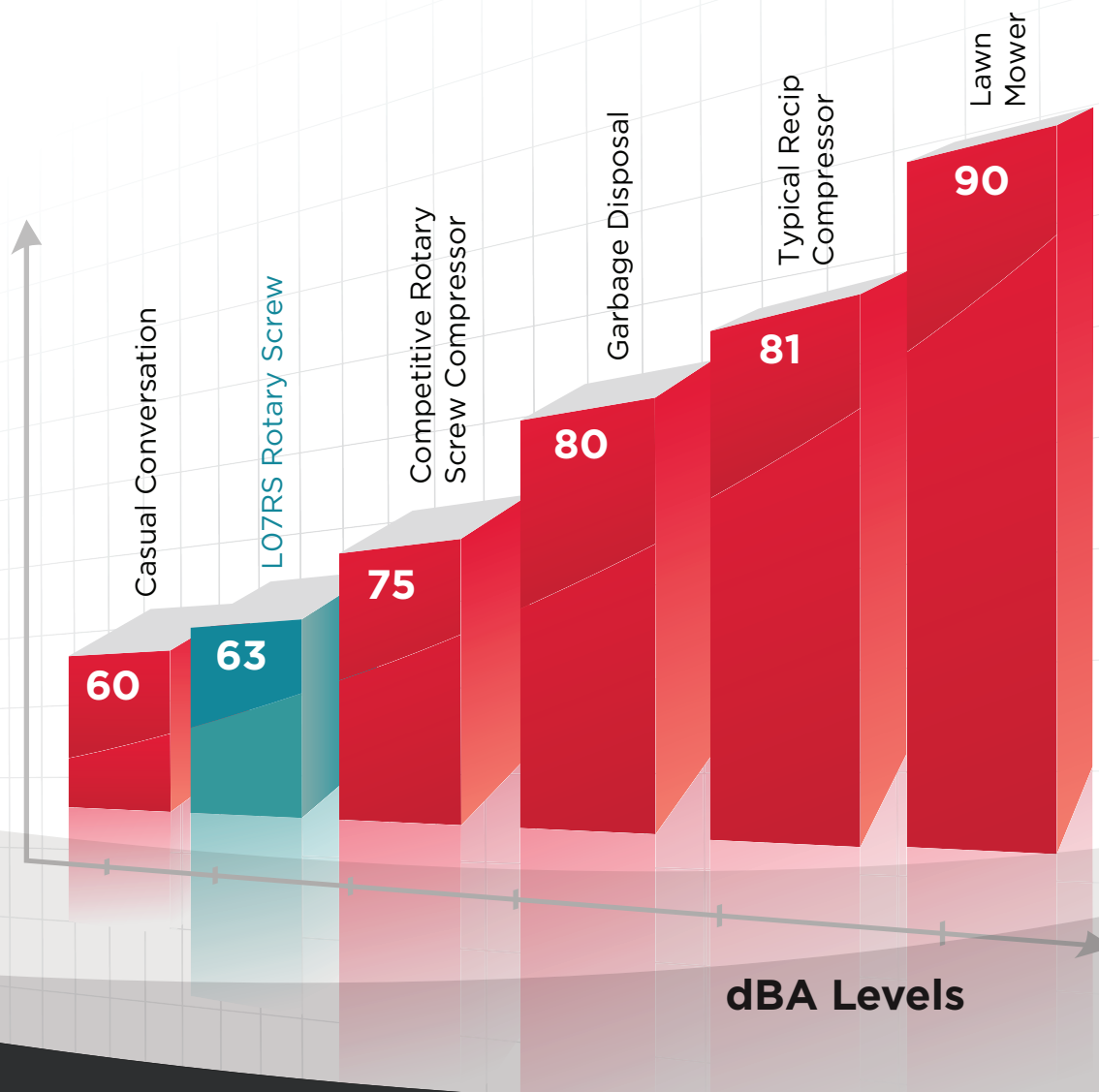
Ability to More Easily  
Handle and Move Machines

**Small Footprint = Cost Savings**

# Compact, Quiet Compressors

## Nearly Silent Noise Levels

The Gardner Denver LRS-Series compressor designs feature high-quality, sound-insulating enclosure panels and a low-noise, thermostatically-controlled, motor-driven fan. These components reduce the noise to whisper-quiet levels and eliminate the need for a separate compressor room, saving money on installation costs.



# Reduce Energy. Maximize Efficiency. Save Money.

## Perfect Response to Your Individual Air Demand

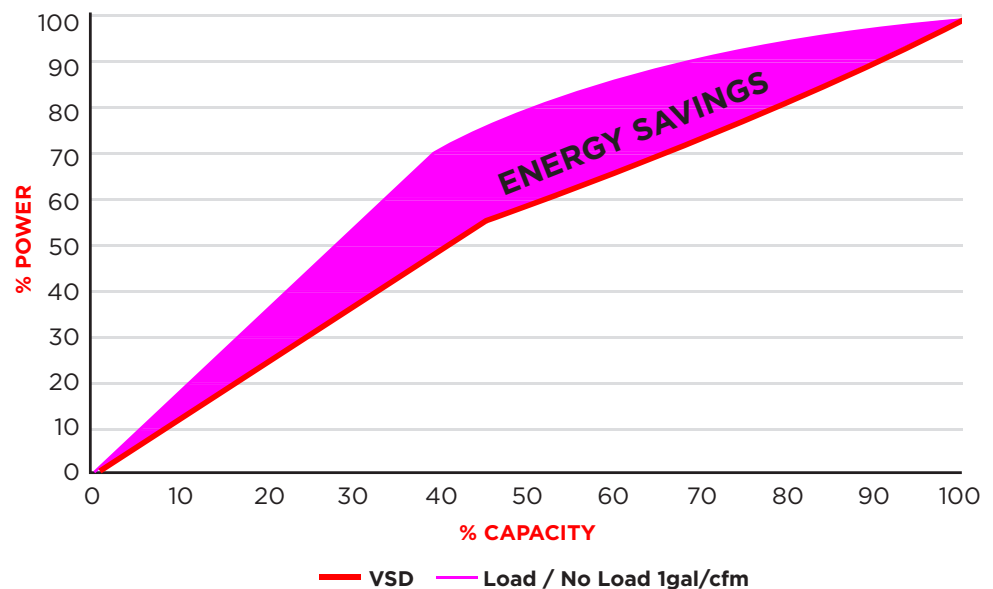
Variable speed compressors from Gardner Denver can efficiently and reliably handle the varying air demand. The right variable speed compressor in the right application delivers significant energy savings and a stable air supply at constant pressure.

## Minimize Your Energy Consumption

The largest cost component of a compressor during its lifetime is the power required to operate it. Maximum efficiency at any level of demand cuts energy costs and saves money.



## Variable Speed Drive



*Energy  
Savings*



High Efficiency  
TEFC Motor

Low Life Cycle Costs

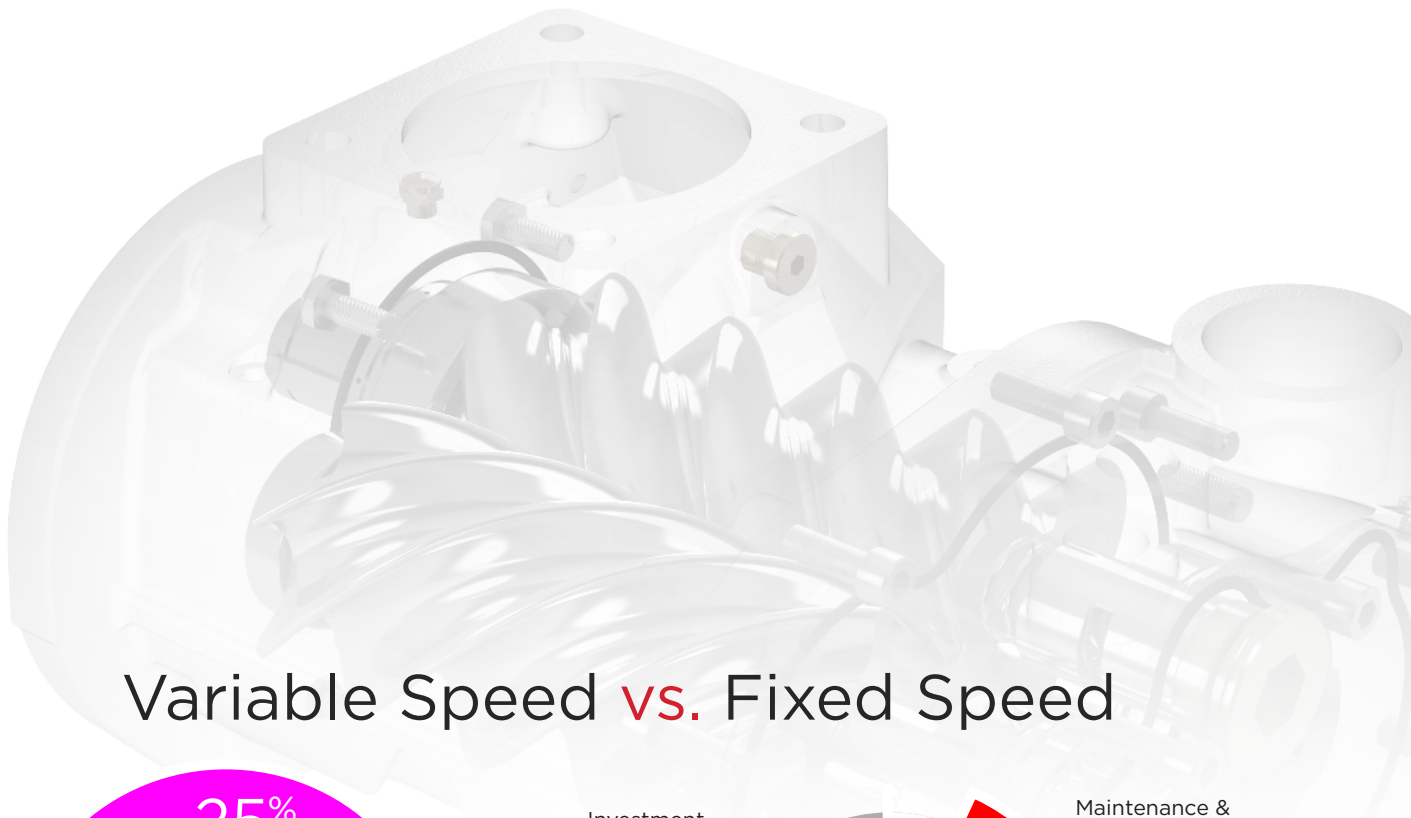
Market Leading Energy Savings

Lowest  
kW/100  
CFM

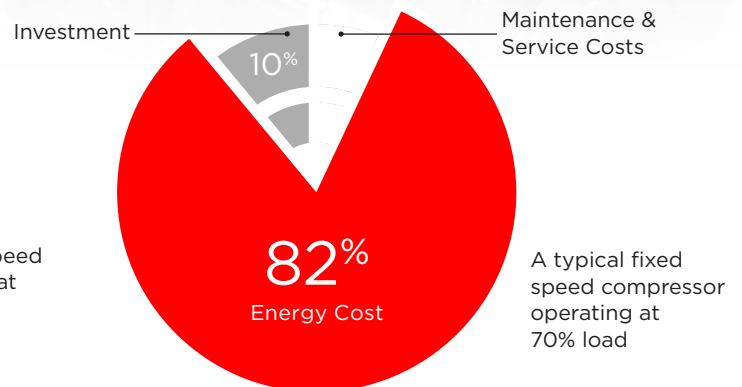
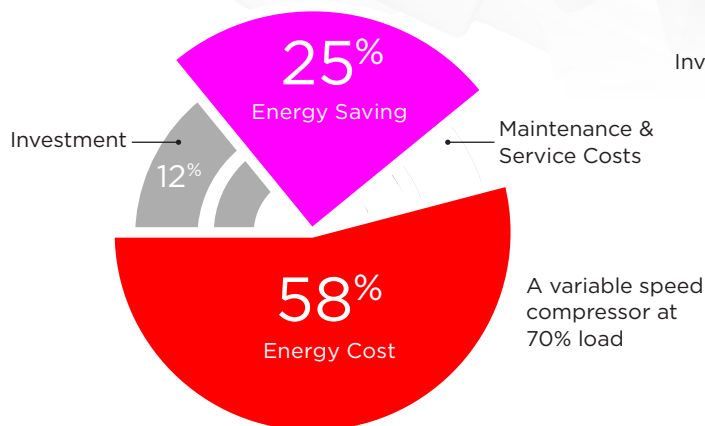
Minimal  
Pressure  
Drop

**VALUE**

Superior  
Specific Power



## Variable Speed **vs.** Fixed Speed



Using a variable speed compressor can easily **save 25% energy** by using just the right amount of energy required to do the job and no more.

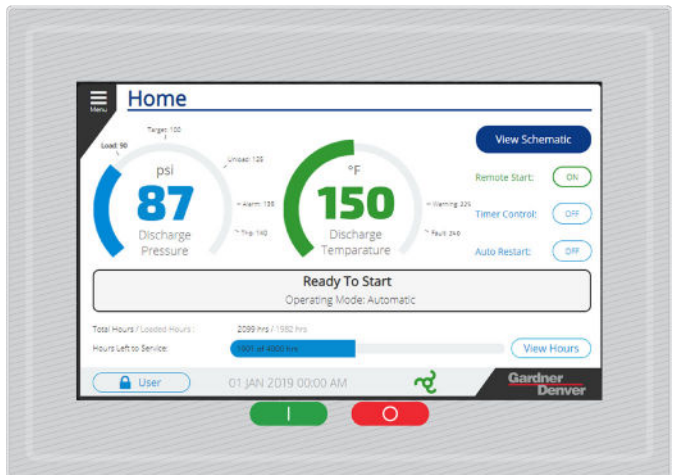
# Get in Touch with the Next Generation of Compressor Controllers

## State-of-the-Art

Gardner Denver completes its industry leading compressor packages with state-of-the-art touch screen controllers: the GD Pilot and Governor™. Featuring cutting edge graphics that provide necessary compressor data and full color schematics in seconds, the Governor™ is now available on select L-Series and LRS-Series compressors models.

## Governor™ Touchscreen Controller Features

- Available on L23RS-L290RS compressor models
- User-friendly navigation with state-of-the-art graphics and design
- Machine status available on a 7-inch, full color touchscreen display for L30RS-L290RS and a 4.3-inch display for L23RS-L29RS
- Detailed schematics at your fingertips
- Advanced machine diagnostics
- Data logging and iConn connection
- Web server to allow access to the Governor™ from your desktop

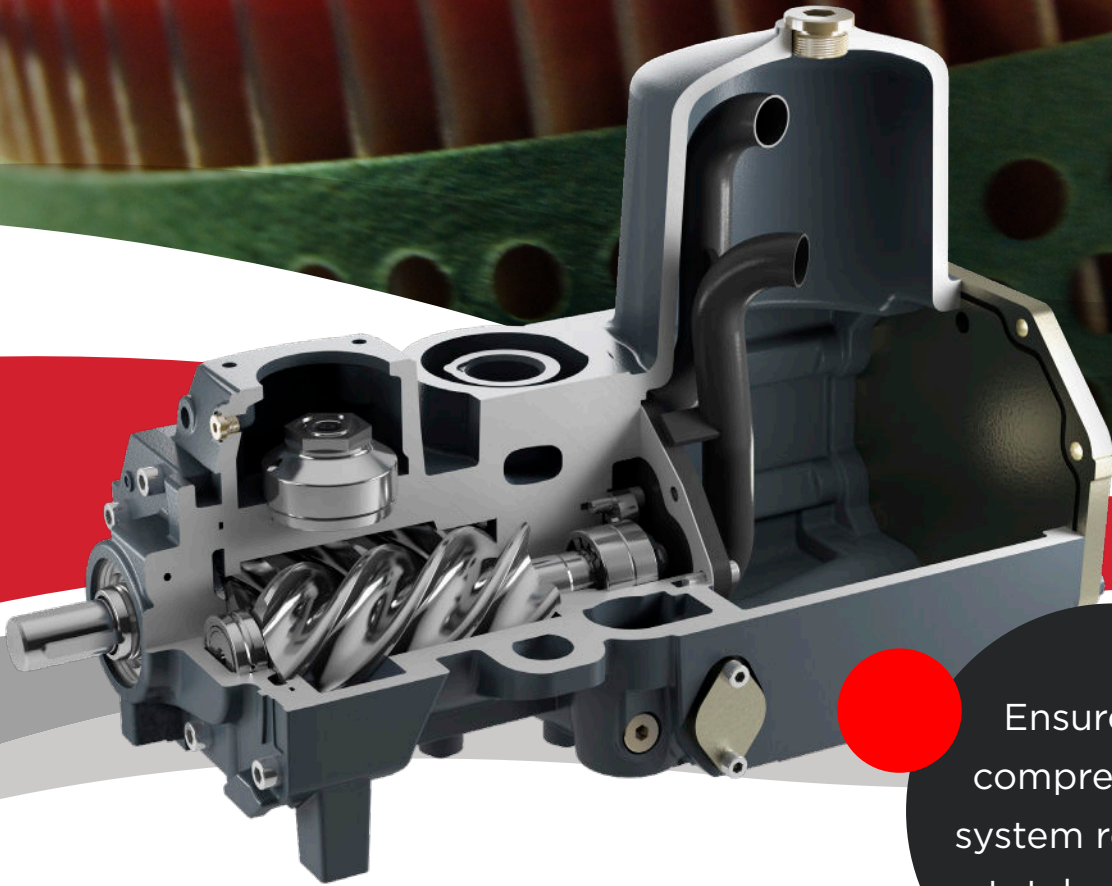


## GD Pilot Controller Features

- Available on L07RS-L22RS compressor models
- Real time clock
- Second pressure setting
- Discharge/line/network pressure data displayed
- Advanced fault history log
- Programmable inputs and outputs
- Auto restart after power failure
- RS485-Modbus RTU standard



# Keeping the System Healthy



Ensure your  
compressed air  
system remains a  
total package

## Total System Protection

Since 1859, Gardner Denver has been supporting the compressed air industry with high quality, long-lasting compressor and air treatment solutions. Carrying on that legacy, our robust line of parts, lubricant and downstream accessories ensure your system stays healthy.

The focus on total system protection by Gardner Denver not only includes OEM parts and fluid solutions, but a commitment to the longevity of your equipment through our industry leading warranty programs.

## Protect your investment.

# Sales & Service Distributors Across America

## An Extensive Network

By leveraging the extensive network of Gardner Denver factory-trained authorized local distributors, your sales, service, and technical support needs can be handled quickly and easily.

To find a distributor visit:  
[www.GardnerDenver.com](http://www.GardnerDenver.com)



## Best Warranties in the Industry

The engineering philosophy of Gardner Denver is to design high quality, reliable equipment and help you protect your new equipment to give you peace of mind. We offer a good, better, and best approach to warranty programs.

### Standard Warranty

Protects your newly purchased equipment if you encounter defects in materials or workmanship for 1 year and provides 2 years of parts and labor coverage for most major components.

### Platinum 10-Year Extended Warranty

The Platinum 10-Year Extended Warranty covers everything in the Standard Warranty as well as defects in materials or workmanship of the airend parts for 10 years and provides 5 years coverage on major components. The equipment must be maintained on-schedule in accordance with the requirements of the warranty statement and the operations manual.

### Platinum+ Full Package Warranty

Adds to the coverage of the Platinum 10-Year Extended Warranty and changes to a 5-year renewable service agreement with one of our factory-trained distributors. By paying for the additional protection, you gain peace of mind, a partnership with your trusted distributor, and the added coverage of wear items and other package components.



## L07RS-L290RS ROTARY SCREW COMPRESSOR

MODEL	DRIVE MOTOR						60 HZ				NOISE LEVEL <sup>2</sup>	WEIGHT <sup>3</sup>		DIMENSIONS L × W × H
	HP	KW	PSIG	BAR	ACFM	M <sup>3</sup> /MIN	NOMINAL PRESSURE		FAD <sup>1</sup>			DB(A)	LBS	KG
L07RS	10	7	100 130 190	6.9 9.0 13.1	44.5 35.7 29.3	1.26 1.01 0.83	110 130 190	7.6 9.0 13.1	42.9 37.6 27.9	1.22 1.07 0.79	63	489	222	27 × 25 × 41 (686 × 635 × 1041)
L11RS	15	11	100 130 190	6.9 9.0 13.1	63.9 55.1 44.5	1.81 1.56 1.26	110 130 190	7.6 9.0 13.1	62.1 56.9 43.5	1.76 1.61 1.23	64	509	231	
L15RS	20	15	100 130 190	6.9 9.0 13.1	91.8 77.0 59.0	2.60 2.18 1.67	110 130 190	7.6 9.0 13.1	92.0 81.3 59.1	2.61 2.30 1.67	67	805	365	
L18RS	25	18	100 130 190	6.9 9.0 13.1	107.7 92.5 77.7	3.05 2.62 2.20	110 130 190	7.6 9.0 13.1	107.8 95.7 77.8	3.05 2.71 2.20	68	840	381	31 × 28 × 47 (787 × 711 × 1194)
L22RS	30	22	100 130 190	6.9 9.0 13.1	125.0 111.2 93.9	3.54 3.15 2.66	110 130 190	7.6 9.0 13.1	125.2 116.3 94.0	3.55 3.29 2.66	69	851	386	
L23RS	30	22	100 130 190	6.9 9.0 13.1	145.8 132.1 102.1	4.13 3.74 2.89	110 145 190	7.6 10.0 13.1	145.5 123.5 102.1	4.12 3.50 2.89	68	1501	681	
L26RS	35	26	100 130 190	6.9 9.0 13.1	169.2 154.0 125.7	4.79 4.36 3.56	110 145 190	7.6 10.0 13.1	168.9 144.9 125.7	4.78 4.10 3.56	70	1561	708	53.0 × 34.6 × 63.5 (1345 × 880 × 1612)
L29RS	40	30	100 130 190	6.9 9.0 13.1	191.4 171.6 134.9	5.42 4.86 3.82	110 145 190	7.6 10.0 13.1	190.9 159.0 134.9	5.41 4.50 3.82	70	1570	712	
L30RS	40	30	100 125 145	6.9 8.6 10.0	194.2 179.0 169.8	5.50 5.07 4.81	110 125 145	7.6 8.6 10.0	194.3 182.5 170	5.51 5.17 4.82	68	2039	925	
L37RS	50	37	100 125 190	6.9 8.6 13.1	238.3 221.0 182.5	6.75 6.26 5.17	110 125 190	7.6 8.6 13.1	238.5 224.6 182.5	6.75 6.36 5.17	69	2099	952	67.8 × 36.2 × 65.3 (1722 × 920 × 1659)
L45RS	60	45	100 125 190	6.9 8.6 13.1	277.5 258.0 216.0	7.86 7.31 6.12	110 125 190	7.6 8.6 13.1	277.0 262.3 216.3	7.85 7.43 6.13	71	2147	974	
L55RS	75	55	110 125 145	7.6 8.6 10.0	361.3 341.1 318.6	10.20 9.70 9.00	100 125 145	6.9 8.6 10.0	361.3 341.1 318.6	10.20 9.70 9.00	69	3805	1726	
L75RS	100	75	110 145 190	7.6 10.0 13.1	463.4 410.5 362.5	13.10 11.60 10.30	100 145 190	6.9 10.0 13.1	463.4 410.5 362.5	13.10 11.60 10.30	72	3968	1800	85 × 48 × 78 (2159 × 1219 × 1981)
L90RS	125	90	100 125 190	6.9 8.6 13.1	612.8 571.5 450.4	17.36 16.19 12.76	100 130 190	7.6 9.0 13.1	627.3 593.0 464.8	17.76 16.79 13.26	77	6102	2768	
L110RS	150	110	100 125 190	6.9 8.6 13.1	731.1 679.2 551.4	20.71 19.24 15.62	100 130 190	7.6 9.0 13.1	742.7 704.6 581.5	21.03 19.95 16.46	77	6107	2770	
L132RS	180	132	100 125 190	6.9 8.6 13.1	802.4 747.7 609.3	22.73 21.18 17.26	100 130 190	7.6 9.0 13.1	819.7 781.4 642.4	23.21 22.13 18.19	78	6142	2786	92 × 54 × 80.3 (2337 × 1372 × 2039)
L160RS	215	160	100 125 190	6.9 8.6 13.1	1116.5 1045.7 836.8	31.62 29.61 23.70	100 125 190	6.9 8.6 13.1	1119.2 1049.8 819.7	31.69 29.73 23.21	76	9652	4378	
L200RS	270	200	100 125 190	6.9 8.6 13.1	1368.0 1299.1 1051.9	38.74 36.79 29.79	100 125 190	6.9 8.6 13.1	1365.2 1291.3 1027.3	38.66 36.57 29.09	78	10082	4573	
L250RS	340	250	100 125 190	6.9 8.6 13.1	1477.3 1401.0 1138.9	41.83 39.67 32.25	100 125 190	6.9 8.6 13.1	1466.0 1369.8 1091.6	41.51 38.79 30.91	79	10293	4669	115 × 82 × 86 (2907 × 2071 × 2193)
L290RS	390	290	100 125 190	6.9 8.6 13.1	1620.7 1542.6 1250.4	45.89 43.68 35.41	100 125 190	6.9 8.6 13.1	1605.6 1504.0 1201.0	45.47 42.59 34.01	81	10326	4684	

1) Data measured and stated in accordance with ISO1217, Ed. 4, Annex C & Annex E at the following conditions:

Air Intake Pressure 1 bar A, Air Intake Temperature 20° C, Humidity 0% (Dry).

2) Noise levels are for air-cooled models, and measured in free field conditions in accordance with ISO 2151, tolerance +/- 3dB.

3) Weights are for air-cooled models.

The leader in every market we serve  
by continuously improving all business processes  
with a focus on innovation and velocity

**Gardner  
Denver®**

**Gardner Denver, Inc.**

1800 Gardner Expressway  
Quincy, IL 62305  
[www.gardnerdenver.com](http://www.gardnerdenver.com)



©2021 Gardner Denver, Inc. Printed in U.S.A.  
GS-L07RS-L290RS 12th Ed. 12/21

Please recycle after use.